



ONWARD IN TRUST

Transforming RCS through partnership



OVERVIEW

Welcome to the Onward in Trust Campaign! Rehoboth Christian School (RCS) is embarking on an exciting venture to transform our school facility. This venture will not only deliver critical upgrades, but will support our school's imperative to provide an environment where our children and grandchildren can receive the best Christ-centered education we can offer.

To help achieve this, the Onward in Trust Campaign requests your support. To begin, we need to raise \$1.2M in gifts and pledges by May 18, 2018. As we continue to build on the vision of a generation ago, please take time to review this information package and prayerfully consider the ways you may be able to contribute. Thank you so much for your ongoing generous support! May God bless these efforts for His glory!

IMPACT TO OUR STUDENTS



Cultivation of our Christian Heritage



Enhanced Learning Environment



Improved Environmental Health



Heightened Safety & Security

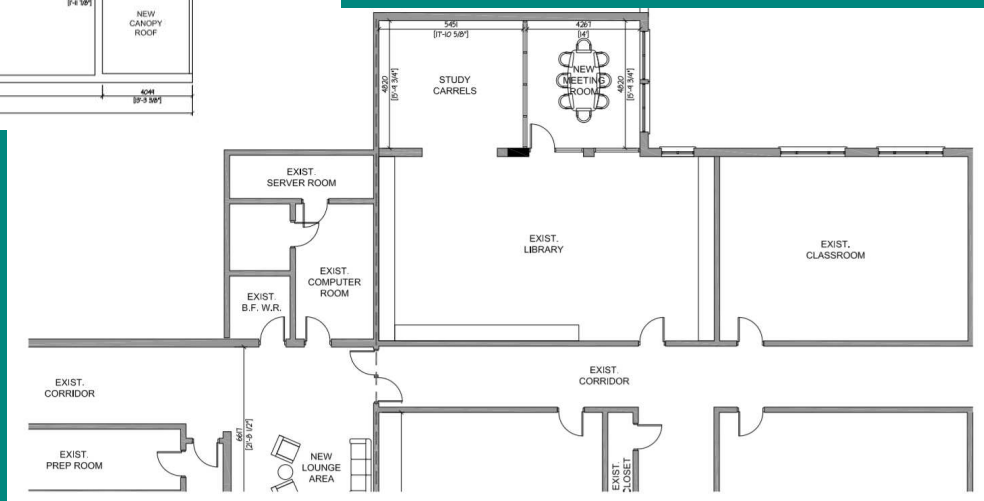
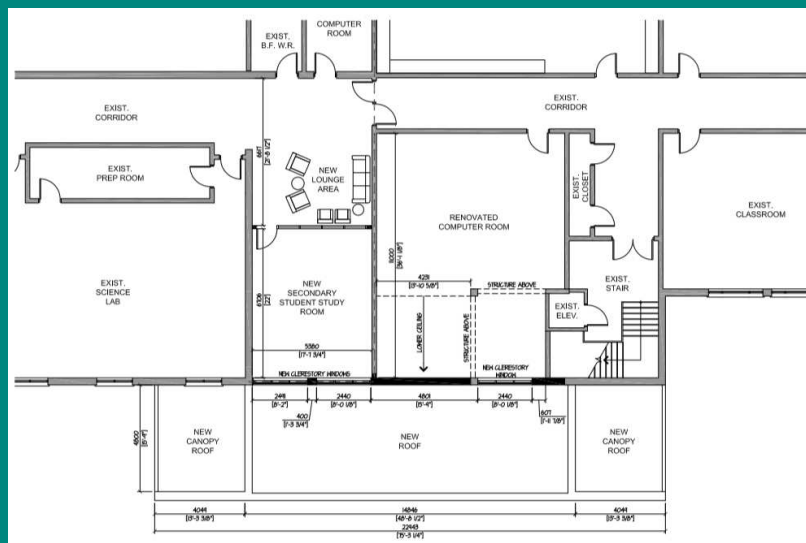
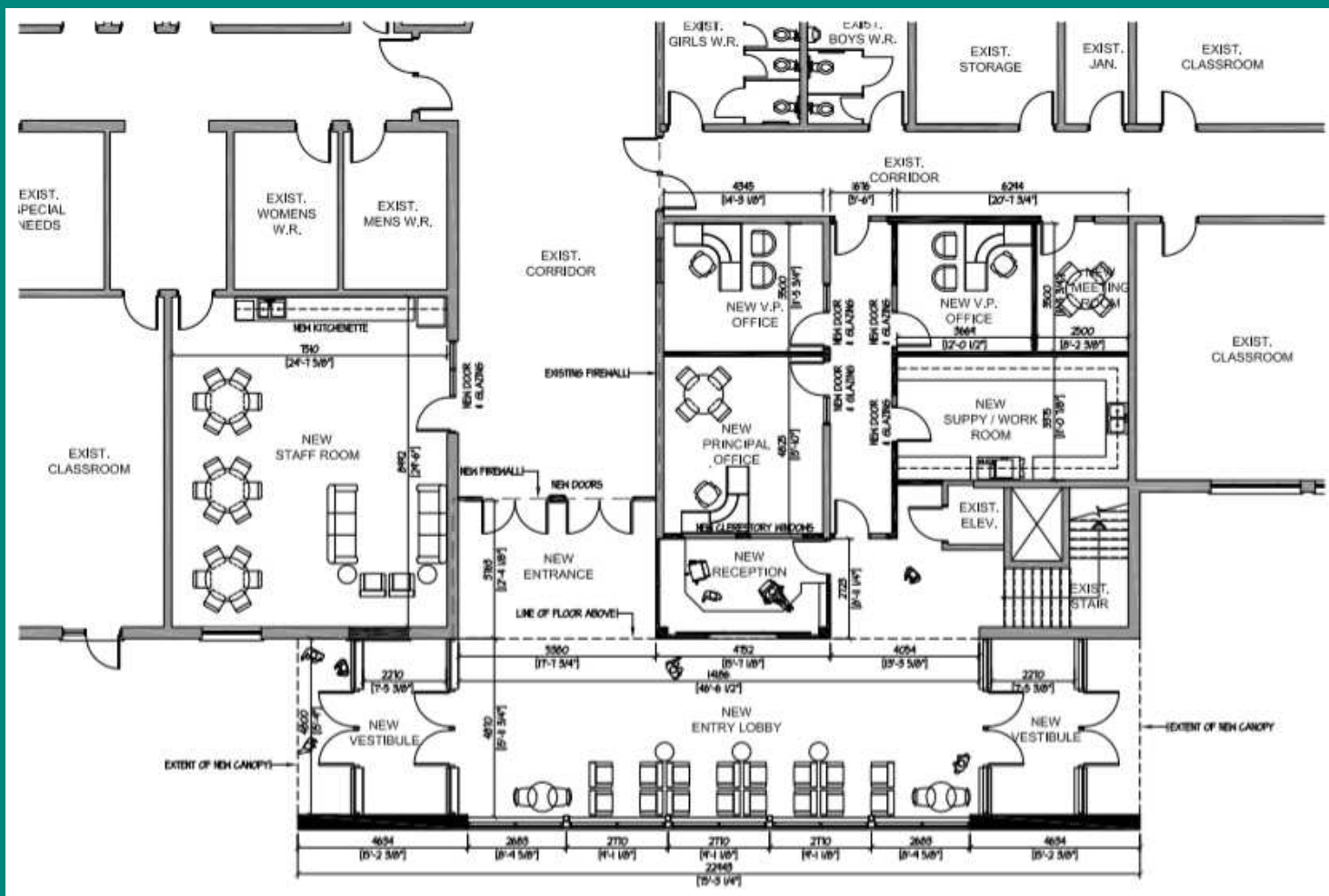
Children
 Health
 Vision
 Access
 Security
 Modernize

Values
 40 Years
 Learning
 Safety
 Teaming Rooms

Attract Talent
 Ethics
 1978
 Fresh Air
 Investment

Future
 Clean
 HVAC
 Morality

The Lord hath made room for us and we shall be fruitful in the land.
Gen.26:22b



GROUND FLOOR LAYOUT DIAGRAMS

2ND FLOOR

INVESTING IN OUR FUTURE



HEARTS & MINDS

- Quality Christ Centered Education
 - Maintain 40 yrs of our God given heritage
 - Future sustainability
- <http://rehoboth.on.ca/about>



ENHANCED LEARNING ENVIRONMENT

- 6 New Teaming spaces for students and staff
- 4 New professional Staff Offices
- Keep and attract new talented staff
- Renovated computer room
- New doors, windows, flooring, plumbing, and finishes in elementary



STUDENT & STAFF HEALTH

- Fresh Conditioned air through new HVAC system
- Welcoming Entrance for visitors, staff and students
- Entrance protected from prevailing west winds
- Clean Environment



SAFETY & SECURITY

- Unified Main Entrance
- Improved Natural Traffic Flow
- More Natural Light
- Better visibility

1.8
(Million \$)
COST OVER 5 YRS

1.2
(Million \$)
GIFTS & PLEDGES
NEEDED BY 5/18/18

120
(Thousand \$)

IN THE BANK

9/19
COMPLETION



See a 360 Degree 3D rendering @
<http://rehoboth.on.ca/about-rcs/support-us/>



ONWARD IN TRUST

HOW CAN I HELP?

To begin work, we need your help to obtain **\$1.2M** in gifts & pledges by May 18, 2018.



FOOD FOR THOUGHT

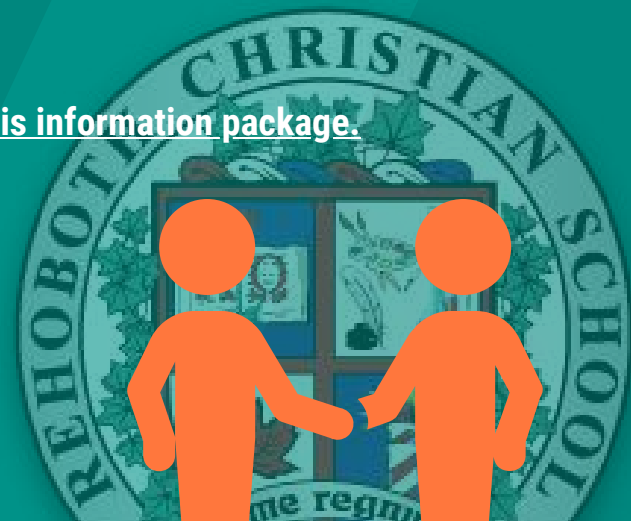
To demonstrate how your pledge can impact this campaign, consider the following:

Gift Total Per Year	# of Donors	Total over 5 Years
\$20,000	5	\$500,000
\$10,000	10	\$500,000
\$5,000	15	\$375,000
\$2,000	20	\$200,000
\$1,000	20	\$100,000
\$500	50	\$125,000
		\$1,800,000

To Pledge an amount, please see forms included in this information package.

You can also donate through our secure link at <http://reboth.on.ca/Support Us/Donate> online or simply mail a cheque to:

Reboth Christian School, c/o Andy Lobbezoo,
198 Inksetter Rd Box 70, Copetown ON L0R 1J0



Thank you for your continued commitment to Christian Education!